

The VENTURIAN

Volume No. 6

Issue No. 2

Fall 2011

VENTURA INTRODUCES THE SILVERADO



Welcome home to the Silverado. This beautiful 2486 Sq. Ft. two-storey plan is the most recent addition to our Premier Series. The main floor includes a unique living/dining room combination with a soaring ceiling over the living room portion, and an island kitchen with a corner party and dinette area which is open to the family room with gas fireplace. Upstairs, the large master suite includes a deluxe ensuite with a corner jetted tub, 5' shower and walk-in closet. Three additional bedrooms, a full bath, and laundry facilities complete the second level. The stucco exterior, including the spacious attached garage (24'x23'-2") featuring double overhead doors and glass window panels, is accented by a generous amount of manufactured stone and smart trim. Stunning!

*This home with a slightly different elevation is currently under construction at
118 Maple Creek Road in Bridgwater Forest*

In This Issue:

Ventura Introduces the Silverado | Ventura Welcomes |
Parade of Homes | Ready for a Change of Pace? |
Ventura Goes Condo | What's New @ Ventura | Sales Agents



VENTURA WELCOMES

It has been a busy year at the Ventura offices. We have been hard at work creating new base plans to excite the many customers looking for something different. As well, our new home purchasers are looking to add many options and changes to our existing plans to create exactly what they want in their dream home. To keep up with the demand we have added 3 more staff to our drafting department. We are proud to welcome:



An impressive educational resume, including both a B.S. in Architecture and a completed Construction Supervision program in the Philippines made **Jane Tizon** an ideal choice to join Ventura's drafting department. Add to that her love of design and it's a great fit. We are pleased that Jane chose to make Canada her new home and we welcome her to the Ventura family.

A diverse educational background, including the U of M, a year of study in Taiwan, and then back to Winnipeg where he has recently completed his Technical Drafting course led **Kevn Hu** to Ventura, where he joins our expanding drafting department. Kevin's interest in languages may come in handy as Ventura's customer base continues to represent many cultures and ethnicities.



A different path found **Jordan Wiebe** in the same Technical Drafting course. Jordan's 1st exposure to the industry was as a framer where he quickly developed an interest in the materials and processes involved. His successful completion of the course brought him to Ventura. Jordan's youth and enthusiasm for the industry will be an asset as we continue to grow.

We also have a new face in our Purchasing Department. We are pleased to introduce:

After a brief departure from the industry, **Sharon Andrews** makes her return to the home building sector working with Edith in Purchasing. Sharon's previous industry experience and education are sure to be a great asset to Ventura. Fair warning to our trades – one of Sharon's hobbies is martial arts!



PARADE OF HOMES

FALL 2011 PARADE

September 17 - October 8, 2011



PARADE DISPLAY HOME HOURS:

Monday to Thursday 3pm - 8pm; Saturday & Sunday Noon - 6pm; Friday By Appointment Only

REMEMBER - OUR DISPLAY HOMES ARE OPEN THROUGHOUT THE YEAR!

READY FOR A CHANGE OF PACE ?

Ventura is pleased to announce that we are now able to offer our clients the ability to build in two additional major subdivisions outside the Perimeter Highway. We will continue to build in La Salle as we have done over the past number of years. We are especially excited to participate in:



Ventura is preparing a triumphant return to Stonewall once again with some of our newest plans. Our Display Home located at 32 Rossmere Crescent is featured in the Fall Parade of Homes. The front elevation is shown on our Parade page.



Phases 3 & 4 of Kingswood South are almost sold out and homes are going up at an amazing pace, but you should soon start to see construction in the next 2 phases as the underground and roads are nearing completion. Check out the gorgeous home that we are building at 2 Tanglewood Drive and then contact Ron Tardiff to find out how this home can be yours.



VENTURA GOES CONDO



In our previous issue, we mentioned the development in Dugald that was in the planning stages. We have now started the site servicing, and construction on the new bungalow condominiums should begin later this fall, with the goal of offering possession in 2012. Contact Evald Frederiksen @ 291-2221 for more information.

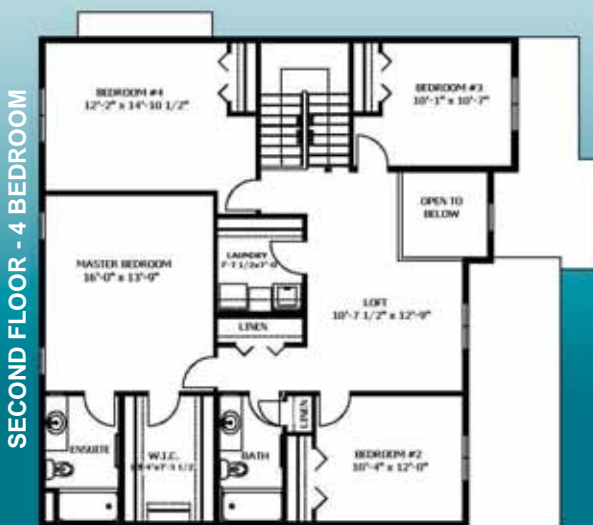


Both the front elevation and the floor plan shown here are conceptual plans at publication time and are subject to change, but we don't anticipate substantial changes.

In addition to the condominium project, the Wheatland Park site will also accommodate 28 single family housing sites in the first phase of the project. Keep checking our website for further developments.

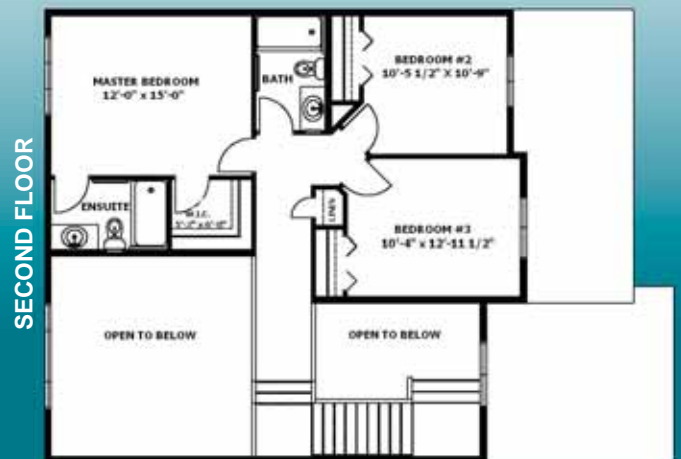
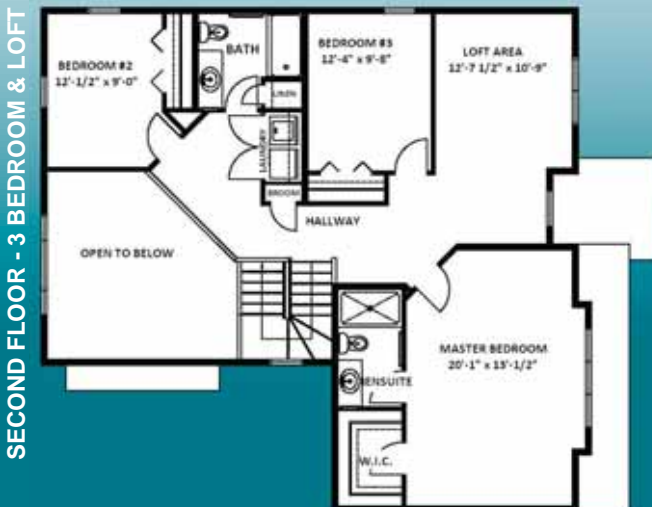
WHAT'S NEW

As mentioned earlier in this publication, Ventura has been hard at work on new plans. Four of these plans are currently under construction in Bridgwater Forest (3) and Kildonan Green (1).



These four plans are just a small sample of the homes that we offer. Please visit our website often as we are constantly updating our inventory

To find out about purchasing any of these homes, or to build these homes on another lot, please contact any of our sales agents listed on the back of this publication.



Contact our Knowledgeable Agents for Information



Paul Saltel
Quest Residential Real Estate
794-5315



Dianne Reed
Quest Residential Real Estate
797-3596



Dave Brownrigg
Gateway Real Estate
479-4744



Dave Sangha
Maximum Realty
999-9902



Ron Tardiff
Trinkl Realty
878-9585



Chris Dare
Quest Residential Real Estate
295-2207



Evald Frederiksen
Quest Residential Real Estate
291-2221

Let us build your Dream Home in the following communities:

Amber Trails • Bridgwater Forest • Bridgwater Lakes • Kildonan Green • River Park South • South Pointe
Kingswood South (La Salle) • Oak Bluff West • Stone Ridge Meadows (Stonewall) • Wheatland Park (Dugald)

We will also build on your land in and around Winnipeg

27 Terracon Place | Winnipeg, Manitoba R2J 4B3 | Ph. 669-2500

