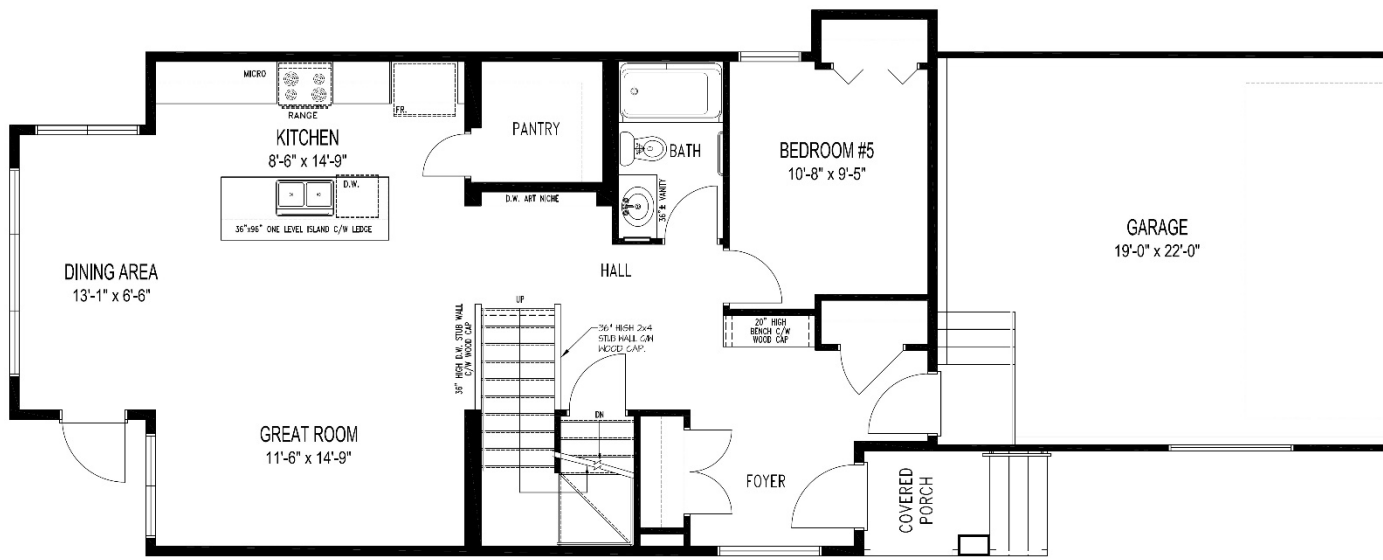




# Harlow A - 23

2,072 Sq. Ft  
5 Bedroom + Loft / 3 Bath  
\*optional features shown





- \*For marketing purposes only.**  
**Optional features shown:**
- Manufactured brick to front elevation
  - Upper exterior pot lights to front elevations
  - Middle exterior pot light above garage door
  - Front door, garage door and window colours
  - Front entry door and garage door styles



# Harlow A - 23

2,072 Sq. Ft  
 5 Bedroom + Loft / 3 Bath

