

THE VENTURIAN

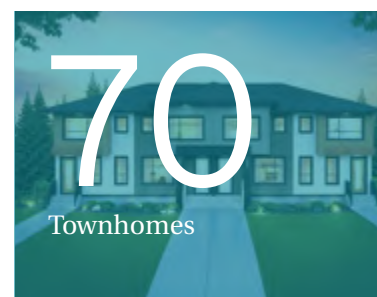
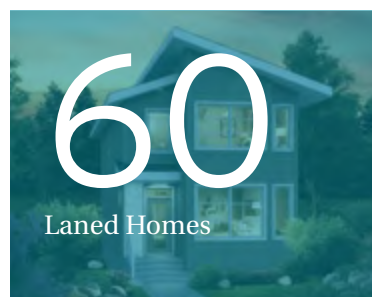
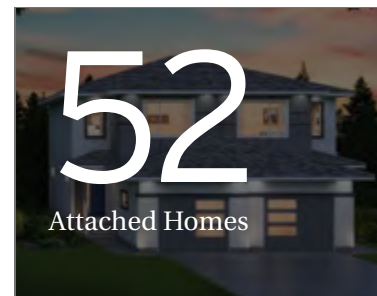
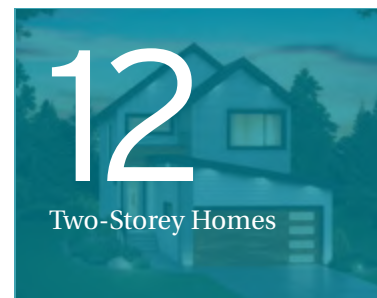
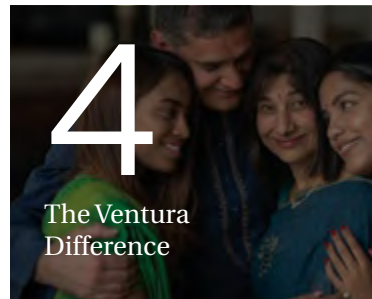


Volume 19 / Issue No. 1 / SPRING 2023





Contents



Value is the Ventura Difference:

PRICE / TERMS / QUALITY / SERVICE

At *Ventura Custom Homes*, we understand that buying a new home is a big decision. We make that decision easier by building high-quality homes at affordable prices. From starter homes to custom estate homes, no home is too simple or too complicated. We can do it all! With flexible financing options and shorter construction timelines, we make it even more affordable and faster to build your dream home. Our commitment to provide excellent after possession warranty service gives our homeowners the peace of mind they deserve, so they can relax and enjoy their new homes with family and friends. After all, value is more than just price – it is the satisfaction of knowing you made the right decision.



WELCOME HOME TO VALUE™

The Following Value-Added Features Come Standard in ALL of Ventura's Coventry Series Homes:

- 8'-6" foundation walls protected by DELTA®-MS Foundation Waterproofing Membrane
- 23/32" Tongue & Groove OSB sub floor glued & screwed to joists
- All rim joists and exterior wall plates sealed with foam gasket to minimize heat loss
- Interior walls fastened down with screws to silence floors
- Engineered studs around exterior doors, to exterior Kitchen walls and exterior staircase walls
- Engineered floor joists to 2nd Floor of all two-storey homes
- Two (2) layers of DuPont Tyvek® high performance protective membrane to exterior of home
- Exterior windows and doors sealed with EnvelopeSealant™ liquid applied membrane to prevent water and air infiltration
- Owens Corning TruDefinition® Duration® Architectural Shingles c/w 40 Year manufacturer's limited lifetime warranty: 10 Year Tru PROtection® Warranty and a further 30 Year Prorated Warranty
- Site-measured, custom-built modern, rigid thermofoil Kitchen cabinets available in 30 different colours and profile combinations
- 2 1/4" flat profile crown moulding and flat profile undercabinet light valance installed flush with doors
- 2 pot and pan drawers with soft-close hardware in Kitchen
- SOFT-CLOSE Hardware to all Kitchen cabinet and Bathroom vanity doors and drawers
- MDF pantry door c/w 1 lite frosted glass & 3rd hinge (as per plan)
- Weiser Welcome Home Series Halifax Levered Door Hardware
- FreeSlide™ wire shelving to closets
- Modern painted white, flat profile 3 1/2" baseboards and 2 1/2" casings
- Smooth painted white ceilings to complete home
- Three coats of paint to interior walls
- Shaw "Origins II" 100% Anso BCF Nylon 30 oz. carpet treated with R2X® stain and soil resistance treatment installed over high density 3/8" 7 lb chip foam under-pad
- ArmorCore Pro UR 10 mil Hardwood-Look Vinyl Flooring with Stain Defense System to Main Floor Excluding Bedrooms, Dens and Staircase(s)
- High quality Kohler plumbing fixtures, sinks and toilets
- Kohler Simplice pull-down Kitchen faucet #K596 (Polished Chrome)
- 1/2" PVC (PEX) water lines c/w 25 Year Manufacturer's Warranty
- Energy saving Drain Water Heat Recovery (DWHR) unit
- Two (2) FROST-PROOF exterior lawn services
- "Tofino" LED Lighting Package with energy-saving LED bulbs
- Front exterior LED pot lights
- Ten (10) 5" interior LED pot lights (as per plan)
- Under-cabinet LED tape lighting to Kitchen cabinets
- Decora® switches and Decora® Kitchen countertop plugs
- USB Decora® island/peninsula plug for convenient smart phone charging
- CAT5e (Internet/Telephone) and Coax (TV) Media outlets to all common areas and bedrooms (as per plan)
- ecobee3 lite WI-FI compatible energy saving smart thermostat c/w mobile app functionality including remote temperature control
- Stainless Steel 250CFM Broan Sahale external exhaust hood fan
- Pre-finished insulated coloured 16' x 7' FLUSH panel garage door
- Four (4) dual pane OBSCURE glass inserts to 16' x 7' garage door
- Liftmaster 1/2 HP chain drive garage door opener c/w 2 remotes
- Keyless entry to the garage
- The best warranty and service in the Manitoba Homebuilding industry, including:
 1. One (1) year warranty for defects in materials, labour and design
 2. Two (2) year warranty for defects in major systems including plumbing, electrical and HVAC
 3. Five (5) year warranty for defects in the building envelope, exterior cladding and windows/doors including those resulting in water penetration
 4. Ten (10) year structural warranty

AND MUCH MORE!!!!

Visit our show homes to learn about what's included in our Duplex, Urban and Metro Series homes

Creating a Great Customer Experience

"Our Experience building with Ventura was fantastic. We decided to build with them as we fell in love with one of their designs. They were very helpful at every step during the build process. I have to say one of their strengths that really stands out above the rest is their willingness to listen and genuinely try to help with any issues/concerns you may have before, during or after moving into your new home. I even recommended them to my best friend and he has had the same amazing treatment. If we decided to build again I know it will be with Ventura"



At Ventura Custom Homes, we strive to Create a Great Customer Experience. We believe outstanding customer service is achieved with honesty, trust, excellent communication, setting clear expectations and delivering on our promises. Through the implementation of well-structured, proprietary processes and procedures, meticulous attention to detail and a company-wide dedication to quality, we work tirelessly to ensure that homebuying, homebuilding and homeownership are seamless, transparent and worry-free. After all, we believe building a new home should be an exciting and memorable experience - an experience that our customers cannot wait to share with everyone they know.



VENTURA CUSTOMER LOYALTY PROGRAM

Share your excitement with your family and friends and take advantage of Ventura's Customer Loyalty Program.

Speak with any of our agents to learn more.

"We built our home with Ventura and I honestly can't say enough good things about them. They have been there for us every step of the way. The house is beautiful, and the build quality is near perfect. Their designs are modern and well thought out with quality products and options. Ventura's real strength though is their customer service, which is easily the best around. Even in our current times, they do anything they can to help. They are friendly, professional, and extremely customer focused. At this point we are planning on moving to a larger build next year and we will be doing this with Ventura again. In my opinion there is no one better."



Design Centre

Imagine a place where you can create the home of your dreams...

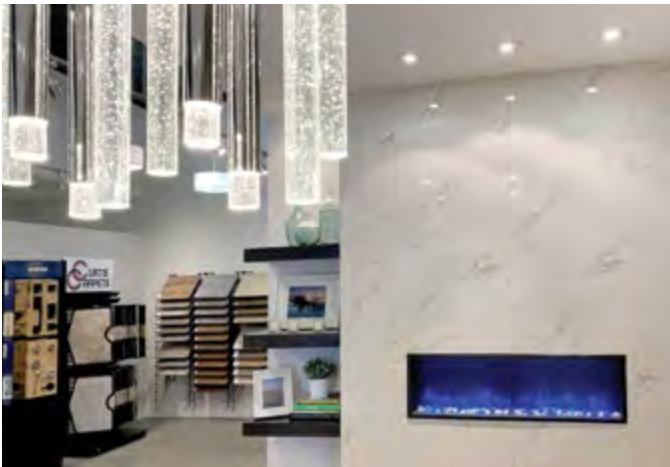
A home that reflects your unique personality and style...

A home that you are truly proud of...

Welcome to the Ventura Custom Homes Design Centre, where our talented interior designer will help you make your dream home a reality. Our design centre showcases a carefully curated collection of interior finishes including a wide array of cabinetry and countertops, flooring and tile, plumbing

fixtures and much more. We strive to create a great customer experience by making the selection process fun and exciting while achieving the desired outcome: a home that our customers truly love. After all, at Ventura, value is more than just price, it is the satisfaction of knowing you made the right decision!



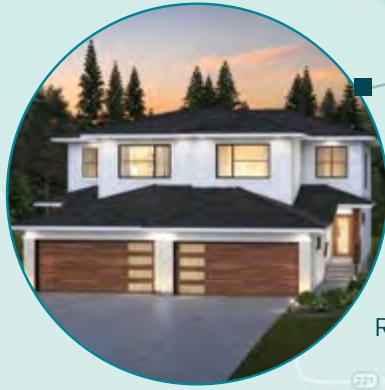


Create the home of your dreams

"Ventura Custom Homes built our family an amazing home and was with us every step of the way. Their prices were very fair and the quality was exceptional. Most importantly, the customer service after we took possession of our home was outstanding. We were treated with respect and the utmost professionalism. We have referred Ventura to three other friends and my brother, all of whom have had the same great experience we had. There is no better builder in Winnipeg. Period."

▼ Stonewall

QUARRY RIDGE PARK
10 Quarry Ridge Drive
Savana
Steve Breton: 204.999.2460



RIVER SPRINGS GROVE
17 River Springs Drive
Ridgedale
Bobby Singh: 204.510.9485



PARKVIEW POINTE
348 Parkview Pointe Drive
Edgemont
Bobby Singh: 204.510.9485



PARKVIEW POINTE
120 Middlechurch Gate
Sonora
Bobby Singh: 204.510.9485



PRAIRIE POINTE
333 Ken Oblik Drive
Robson
Jon Dundas: 204.292.2912



PRAIRIE VIEW LAKES
27 Alison Avenue
Monterey
Blake Vasko: 204.294.6608



La Salle
▼

WINNIPEG

HIGHLAND POINTE
97 Goodman Drive
Thurlow
Bobby Singh: 204.510.9485



HIGHLAND POINTE
177 Goodman Drive
Montana
Bobby Singh: 204.510.9485



SUMMERLEA
191 Big Bluestem Road
Bristol
Anders Frederiksen:
204.226.7128



DEVONSHIRE PARK
27 Sheilagh Ball Cove
Huxley
Evald Frederiksen: 204.291.2221



BONAVISTA
2 Twintree Way
Drake
Paul Saltel: 204.794.5315
Chris Dare: 204-295-2207



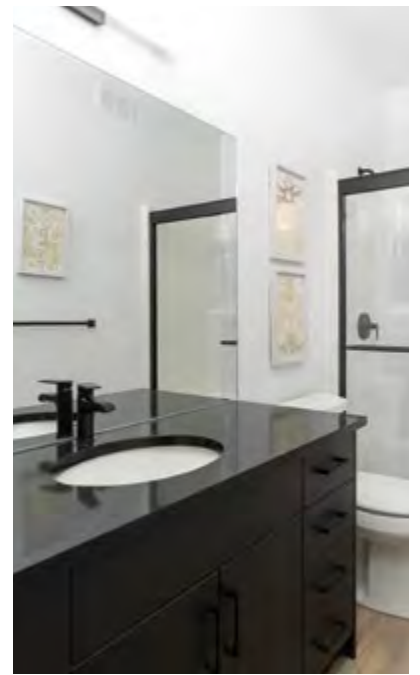
VENTURA SHOW HOMES ARE OPEN ALL YEAR. PRIVATE VIEWINGS AVAILABLE BY APPOINTMENT.
CALL OUR AGENTS FOR MORE INFO.

COVENTRY SERIES

Two-Storey Homes

Designed for a wide range of lifestyles, our twenty-eight two-storey plans provide our clients with unparalleled selection and options for customization.





Bristol

SOFT: 1,447
Bed: 3 Bedroom
Bath: 2.5 Bathroom
Width: 24'



MAIN FLOOR



SECOND FLOOR

ELEVATION "A"



Bristol

SQFT: 1,447

Bed: 3 Bedroom

Bath: 2.5 Bathroom

Width: 24'



MAIN FLOOR



SECOND FLOOR

ELEVATION "C"



Bristol

SOFT: 1,447
Bed: 3 Bedroom
Bath: 2.5 Bathroom
Width: 24'



MAIN FLOOR



SECOND FLOOR

ELEVATION "D"



Kinsley

SQFT: 1,486

Bed: 3 Bedroom

Bath: 2.5 Bathroom

Width: 26'



MAIN FLOOR



SECOND FLOOR



Comox

sqft: 1,523
Bed: 3 Bedroom
Bath: 2.5 Bathroom
Width: 26'



MAIN FLOOR



SECOND FLOOR

ELEVATION "A"



Comox

sqft: 1,523

Bed: 3 Bedroom + Loft

Bath: 2.5 Bathroom

Width: 26'



MAIN FLOOR



SECOND FLOOR

ELEVATION "C"



Branson

SQFT: 1,652

Bed: 4 Bedroom

Bath: 3 Bathroom

Width: 26'



MAIN FLOOR



SECOND FLOOR



Branson

SQFT: 1,709

Bed: 4 Bedroom

Bath: 3 Bathroom

Width: 26'



MAIN FLOOR



SECOND FLOOR

ELEVATION "B"



Branson

SQFT: 1,686

Bed: 4 Bedroom

Bath: 3 Bathroom

Width: 26'



MAIN FLOOR



SECOND FLOOR

ELEVATION "C"



Thurlow

SQFT: 1,704
Bed: 4 Bedroom
Bath: 3 Bathroom
Width: 26'



MAIN FLOOR



SECOND FLOOR



Thurlow

SQFT: 1,704
Bed: 4 Bedroom
Bath: 3 Bathroom
Width: 26'



MAIN FLOOR



SECOND FLOOR

ELEVATION "C"



Huxley

sqft: 1,759

Bed: 3 Bedroom + Loft

Bath: 2.5 Bathroom

Width: 24'



MAIN FLOOR



SECOND FLOOR

ELEVATION "A"



Huxley

sqft: 1,759

Bed: 3 Bedroom + Loft

Bath: 2.5 Bathroom

Width: 24'



MAIN FLOOR



SECOND FLOOR

ELEVATION "C"



St. Thomas

sqft: 1,784

Bed: 3 Bedroom + Loft

Bath: 2.5 Bathroom

Width: 28'



MAIN FLOOR



SECOND FLOOR

ELEVATION "A"



Harlow

SQFT: 1,922

Bed: 4 Bedroom + Loft

Bath: 2.5 Bathroom

Width: 24'



MAIN FLOOR



SECOND FLOOR

ELEVATION "A"



Harlow

SOFT: 1,922
Bed: 4 Bedroom + Loft
Bath: 2.5 Bathroom
Width: 24'



MAIN FLOOR



SECOND FLOOR

ELEVATION "C"



Jaxson

SQFT: 1,922

Bed: 4 Bedroom + Loft/Tech Area

Bath: 3 Bathroom

Width: 28'



MAIN FLOOR



SECOND FLOOR

ELEVATION "A"



Jaxson

SQFT: 1,922

Bed: 4 Bedroom + Loft/Tech Area

Bath: 3 Bathroom

Width: 28'



MAIN FLOOR



SECOND FLOOR

ELEVATION "B"



Jaxson

sqft: 1,922

Bed: 4 Bedroom + Loft/Tech Area

Bath: 3 Bathroom

Width: 28'



MAIN FLOOR



SECOND FLOOR

ELEVATION "C"



Stonecliffe

SQFT: 2,003

Bed: 3 Bedroom + Loft

Bath: 2.5 Bathroom

Width: 32'



MAIN FLOOR



SECOND FLOOR

NOTE: Optional Main Floor Guest Suite c/w Full Bath Shown

ELEVATION "A"



Stonecliffe

SQFT: 2,017
Bed: 3 Bedroom + Loft
Bath: 2.5 Bathroom
Width: 32'



MAIN FLOOR



SECOND FLOOR

NOTE: Optional Spicy Kitchen and Luxury Ensuite Shown

ELEVATION "B"



Highview

SQFT: 2,094

Bed: 4 Bedroom + Loft

Bath: 3 Bathroom

Width: 34'



MAIN FLOOR



SECOND FLOOR



Edgemont

sqft: 2,174

Bed: 5 Bedroom + Loft

Bath: 3 Bathroom

Width: 32'



MAIN FLOOR



SECOND FLOOR

ELEVATION "A"



Edgemont

SQFT: 2,174

Bed: 5 Bedroom + Loft

Bath: 3 Bathroom

Width: 32'



MAIN FLOOR



SECOND FLOOR

NOTE: Optional Spicy Kitchen and Luxury Ensuite Shown

ELEVATION "B"



Edgemont

SOFT: 2,174

Bed: 5 Bedroom + Loft

Bath: 3 Bathroom

Width: 32'



MAIN FLOOR



SECOND FLOOR

ELEVATION "C"



Robson

SQFT: 2,220

Bed: 5 Bedroom + Loft/Tech Area

Bath: 3 Bathroom

Width: 26'



MAIN FLOOR



SECOND FLOOR



Monterey

sqft: 2,237

Bed: 4 Bedroom + Loft

Bath: 3 Bathroom

Width: 34'



MAIN FLOOR



SECOND FLOOR



Hudson

SQFT: 2,545

Bed: 4 Bedroom + Bonus Room

Bath: 2.5 Bathroom

Width: 26'



MAIN FLOOR



SECOND FLOOR



COVENTRY SERIES

Bungalow & Bi-Level Homes

Designed for everyone from young families preparing for the first child to empty nesters looking to “age-in-place”, our bungalow and bi-level homes are perfect for families of all types.





Madison

sqft: 1,170

Bed: 3 Bedroom

Bath: 2 Bathroom

Width: 26'



MAIN FLOOR



Burnaby

SQFT: 1,256

Bed: 3 Bedroom

Bath: 2 Bathroom

Width: 32'



MAIN FLOOR



Wyndham

sqft: 1,283

Bed: 3 Bedroom

Bath: 2 Bathroom

Width: 32'



MAIN FLOOR



Bowen

SQFT: 1,292

Bed: 3 Bedroom

Bath: 2 Bathroom

Width: 32'



MAIN FLOOR



Kendall

SQFT: 1,485
Bed: 3 Bedroom
Bath: 2 Bathroom
Width: 38'



MAIN FLOOR



Laguna

sqft: 1,555
Bed: 3 Bedroom
Bath: 2 Bathroom
Width: 34'



MAIN FLOOR



Ridgedale

SQFT: 1,756

Bed: 3 Bedroom

Bath: 2 Bathroom

Width: 38'



MAIN FLOOR

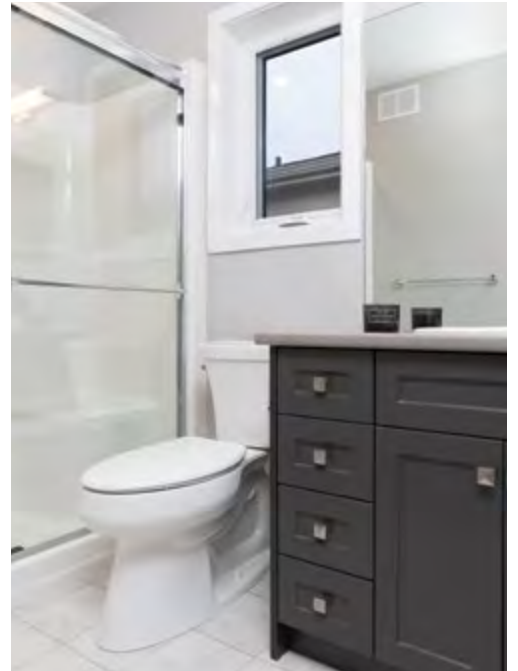


DUPLEX SERIES

Attached Homes

Designed to provide unrivaled affordability, our attached homes maintain the feel and privacy of traditional detached homes at the lowest prices possible.





Sonora

sqft: 1,370

Bed: 2 Bedroom

Bath: 2 Bathroom

Width: 28' (Unit) / 56' (Building)



MAIN FLOOR



Savana

SQFT: 1,461 Unit A / 1,447 Unit B
Bed: 3 Bedroom
Bath: 2.5 Bathroom
Width: 24' (Unit) / 48' (Building)



MAIN FLOOR



SECOND FLOOR



Montana

sqFT: 1,508 Unit A / 1,489 Unit B
Bed: 3 Bedroom
Bath: 2.5 Bathroom
Width: 20' (Unit) / 40' (Building)



MAIN FLOOR



SECOND FLOOR

ELEVATION "A"



Montana

sqft: 1,508 Unit A / 1,489

Bed: 3 Bedroom

Bath: 2.5 Bathroom

Width: 20' (Unit) / 40' (Building)



MAIN FLOOR



SECOND FLOOR

ELEVATION "B"

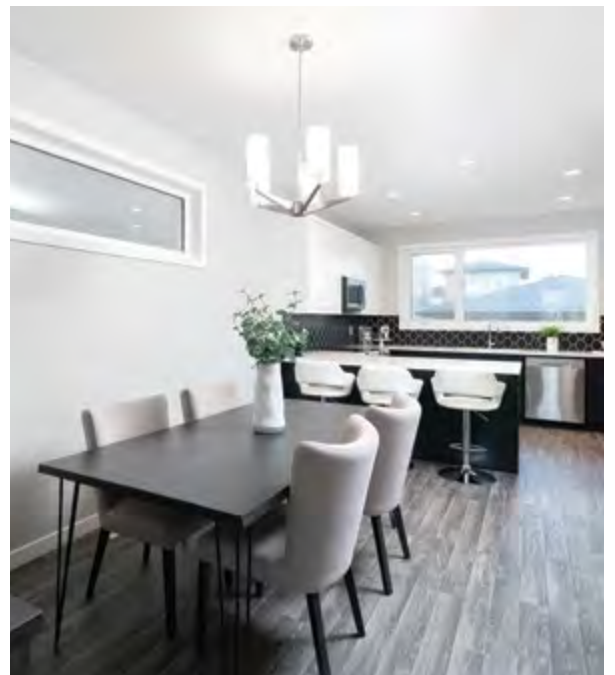


URBAN SERIES

Laned Homes

Designed for first time homebuyers and young families, our modern laned homes blend affordability with cutting edge exteriors and floor plans.





Aspen

sqft: 1,333

Bed: 3 Bedroom

Bath: 2.5 Bathroom

Width: 18' (Unit) /36' (Building)



MAIN FLOOR



SECOND FLOOR

LANED DUPLEX ELEVATION "A"



Ava

SQFT: 1,314

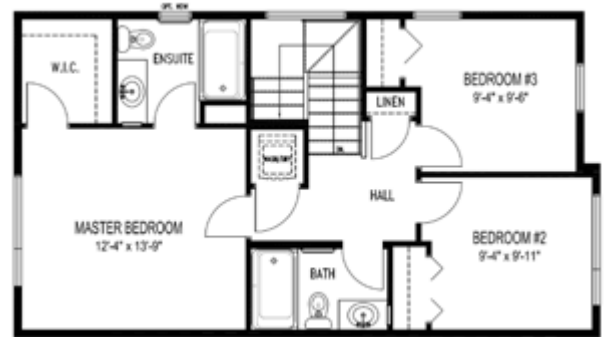
Bed: 3 Bedroom

Bath: 2.5 Bathroom

Width: 20'



MAIN FLOOR



SECOND FLOOR



Avery

SOFT: 1,330
Bed: 3 Bedroom
Bath: 2.5 Bathroom
Width: 18'



MAIN FLOOR



SECOND FLOOR

ELEVATION "A"



Avery

sqft: 1,330

Bed: 3 Bedroom

Bath: 2.5 Bathroom

Width: 18'



MAIN FLOOR



SECOND FLOOR

ELEVATION "B"



Avery

sqft: 1,330

Bed: 3 Bedroom

Bath: 2.5 Bathroom

Width: 18'



MAIN FLOOR



SECOND FLOOR

ELEVATION "C"



Brighton

SQFT: 1,426

Bed: 3 Bedroom

Bath: 2.5 Bedroom

Width: 20'



MAIN FLOOR



SECOND FLOOR



Colton

sqft: 1,512

Bed: 3 Bedroom

Bath: 2.5 Bathroom

Width: 20'



MAIN FLOOR



SECOND FLOOR



Chloe

SQFT: 1,527

Bed: 3 Bedroom

Bath: 2.5 Bathroom

Width: 20'



MAIN FLOOR



SECOND FLOOR



Cooper

sqft: 1,572

Bed: 3 Bedroom + Tech Room

Bath: 2.5 Bathroom

Width: 20'



MAIN FLOOR



SECOND FLOOR



Drake

SQFT: 1,659

Bed: 3 Bedroom + Loft

Bath: 2.5 Bathroom

Width: 20'



MAIN FLOOR



SECOND FLOOR



METRO SERIES

Townhomes

Our contemporary townhomes blend modern designs and efficient floor plans to create an attractive combination of style, functionality and affordability.

**Coming soon in Highland Pointe and Prairie Pointe.*



Manhattan 4-Plex

SQFT: 1,321

Bed: 3 Bedroom

Bath: 2.5 Bathroom

Width: 18'



MAIN FLOOR



SECOND FLOOR



Manhattan 5-Plex

SQFT: 1,321

Bed: 3 Bedroom

Bath: 2.5 Bathroom

Width: 18'



MAIN FLOOR



SECOND FLOOR



Brooklyn 5-Plex

SQFT: 1,399

Bed: 3 Bedroom

Bath: 2.5 Bathroom

Width: 19'



MAIN FLOOR



SECOND FLOOR





Ventura Land Company

FOUR GROWING COMMUNITIES FOR YOUR FAMILY + TWO COMING SOON!

Ventura Land Company is a leading developer of master planned communities in Manitoba that prides itself on building communities with vision. In our bedroom communities you will pay lower property taxes, get a much larger yard, and live in safe, family friendly communities.



Quarry Ridge Park

Stonewall is a fully self-contained town to raise your family, complete with recreational complexes, K-12 schools, and every amenity a growing family needs. Quarry Ridge Park offers housing options for every lifestyle and boasts a 14 acre forest and 10 acres of green space. Act now to pick your own park facing yard with no backdoor neighbours! Choose your own lot, pick your own builder!



Phase 6+7 Now Selling!

Duplex bungalows and two storey duplexes coming fall 2022



Sonora A - 22



Savana A - 22



Prairie View Lakes

La Salle is a fast growing town 8KM from South Winnipeg boasting an \$11 million K-8 school expansion and renovation, new rec centre, two new daycares and huge new playground.

Phase 6 & 7 are NOW SELLING! Offering lake view walk out basement building lots & standard building lots on a quiet streets. The growing Prairie View Lakes community offers more space for your family!

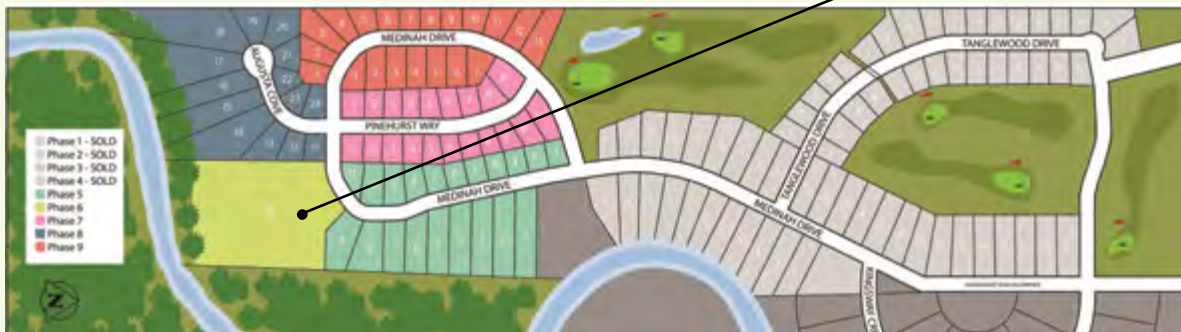
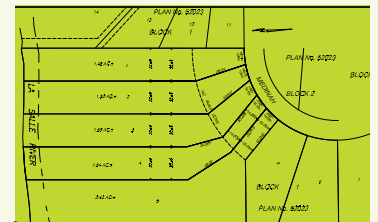


Come see the new state of the art children's playground!



KINGSWOOD SOUTH

Introducing the last Phase of Kingswood South offering exclusive forested lots backing onto the La Salle River! These are the largest lots in the subdivision and offer an exclusive enclave set back from luxury homes on Medinah Drive. Imagine your winding driveway leading to your private 1.5 - 2.5 acre estate nestled in the forest along the banks of the La Salle.



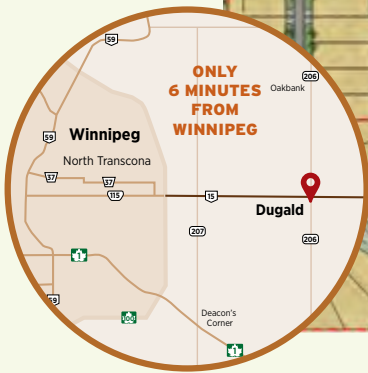
These are some of the largest estate river lots ever in La Salle!

WHEATLAND PARK

Only 6KM east of Winnipeg is Dugald, MB, just minutes from the Town of Oak Bank, and boasting a beautiful K-8 French Immersion School, community centre & skate park, plus some of the best baseball diamonds in the Capital Region. We are excited to announce the release of Phase 5 of the Wheatland Park subdivision in Spring 2023!. There is something for everyone in this great community. Average lots range from 50 to 70 ft wide and measure over 120 to 200+ ft deep, including lake lots! The Community abuts the newly expanded 'Ecole Dugald, dual track french Immersion/english school plus daycare!

Walk your kids to school each day and enjoy the serenity of country living!

**PHASE 5
COMING
SOON!**



Enquire with our builders for select remaining lots in Phase 4!



RIVERVIEW PARK

COMING SOON!

After much anticipation Ventura is excited to announce new phases in La Salle's River View Park. This community will offer 100 ft x 500+ ft river lots, 80ft treed forested lots, and standard 50-70 ft lots, as well. With plans for bungalow duplexes and two story duplexes as well this community offers something for everyone. La Salle is growing with a new community centre, two new day cares, a newly expanded K-8 school and the recently renovated Kingswood Golf Course. Complete with banking, retail, restaurants and shops La Salle is growing into a pre-eminent community for everyone. With River View Park only minutes from the perimeter you can have the best of both worlds while enjoying lower property taxes and much larger lot sizes than the city!



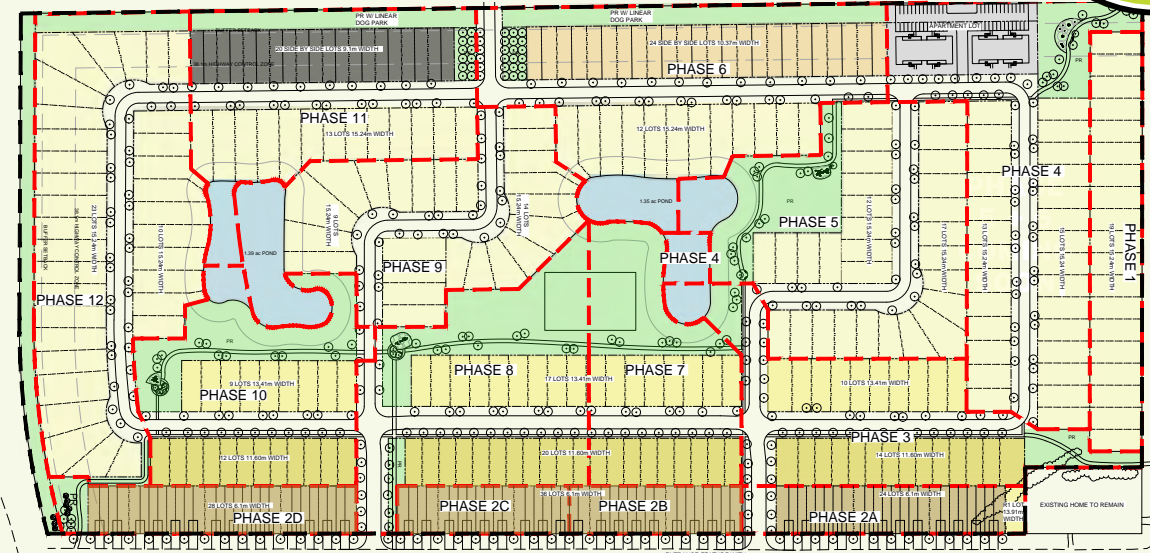
Some of the largest river lots in La Salle!



**MANDAN
TRAILS**
Sanford MB

Further announcements on this community will be released as we progress through the planning, approval and development stages.

**COMING
SOON!**



Sign up for more information info@venturadevelopments.ca



Ventura Developments

CONDOMINIUM & APARTMENT LIVING REDEFINED

Ventura Developments specializes in the development of high quality condominium & apartment communities that are *built to a higher standard*. We offer apartment communities and condominium communities for discerning customers seeking stylish, luxurious and well-designed spaces, complete with curated amenities.



Located at Bison Drive and Centre Street, at the heart of Bridgewater's visionary Town Centre mixed-use community will be six buildings and over 500+ apartments complimented by access to six unique building amenity features for residents to share in this exciting development. With commercial amenities also at grade, and out the door/down the street, this truly is one of the most walkable places you can choose in Winnipeg. EVERYTHING is just out your door!

With Bison Drive connecting to Centre Street in the future, direct rapid transit access to U of M will be available!



Construction underway!



Join the wait list rentventura.ca

PRAIRIE PLACE

Prairie Place in La Salle, MB is your place!
 Don't miss your chance to own a quality built new home at the lowest price available in the Winnipeg Metro Region!
 Over 100 new buyers have already made the move!
 New lots released in Phase 4 this fall, along with refreshed floor plans, elevations and selections. Enjoy the amenities of La Salle, MB for your new and growing family!

Quick possession homes available!

PHASE 4 & 5 NOW SELLING!



QUARRY PLACE

3.99% INTEREST RATE
 *Some conditions apply *Subject to approval
+ \$10,000 Upgrade PROMO
ASK US!

Quarry Place provides an affordable option to homeownership for families looking to put down roots in a growing and vibrant community. Constructed to a higher standard than most homes and condos, buying in Quarry Place ensures your investment is built on a solid foundation. Located only 20 minutes from the City of Winnipeg, Stonewall is self-contained town with all the amenities of city living, but in a rural country atmosphere that's safe, affordable and friendly. This is your chance to own a home in one of the best places to live in Manitoba!



With only 38 lots/units to choose from, this won't last! Quick possession homes available!



THE HAVEN

BY VENTURA DEVELOPMENTS INC.



The Haven Apartments are two 16-Suite buildings located in Quarry Ridge Park alongside the forest. These suites offer market affordable rents for one-bedroom and two-bedroom suites. Built with quality in mind, these suites all offer 9 ft ceilings, pot lights, large kitchens, walk in closets, ensuite washrooms with rain shower heads, and stainless steel appliances - including in-suite laundry.



FALL 2023 MOVE-IN! [Join the wait list rentventura.ca](http://rentventura.ca)



Prairie Grove TownHomes



Prairie Grove Townhomes is a series of 4 plex and 6 plex rental townhomes, totaling 34 units, constructed on Country Vista Drive in Prairie View Lakes, LaSalle. These townhomes offer market affordable rents for two storey townhouses, with 3 bedrooms, 2.5 bath . Built with quality in mind, these suites all offer 9 ft ceilings, one-car attached garages, rear decks and yards, pot lights, large kitchens, walk in closets, ensuite washrooms with rain shower heads, and stainless-steel appliances - including in-suite laundry.



[Join the wait list rentventura.ca](http://rentventura.ca)

Grosvenor Manor

Coming Soon to Grosvenor near Wellington Crescent - Ventura Development's latest luxury infill development! This heritage inspired building will compliment the community and offer modern interior spaces unparalleled in the area. Be a part of one of Winnipeg's finest streets, offering everything you need just outside your door!



Join the wait list rentventura.ca



RENAISSANCE.

BY VENTURA DEVELOPMENTS INC.

FULLY LEASED!



Phase 2 coming soon! Join the wait list rentventura.ca !







ventura.mb.ca
info@ventura.mb.ca

