

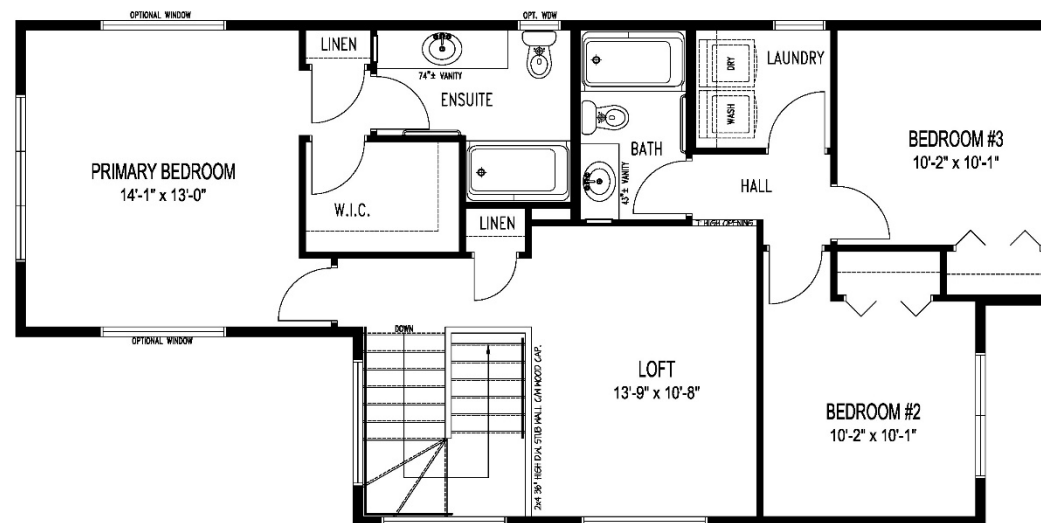
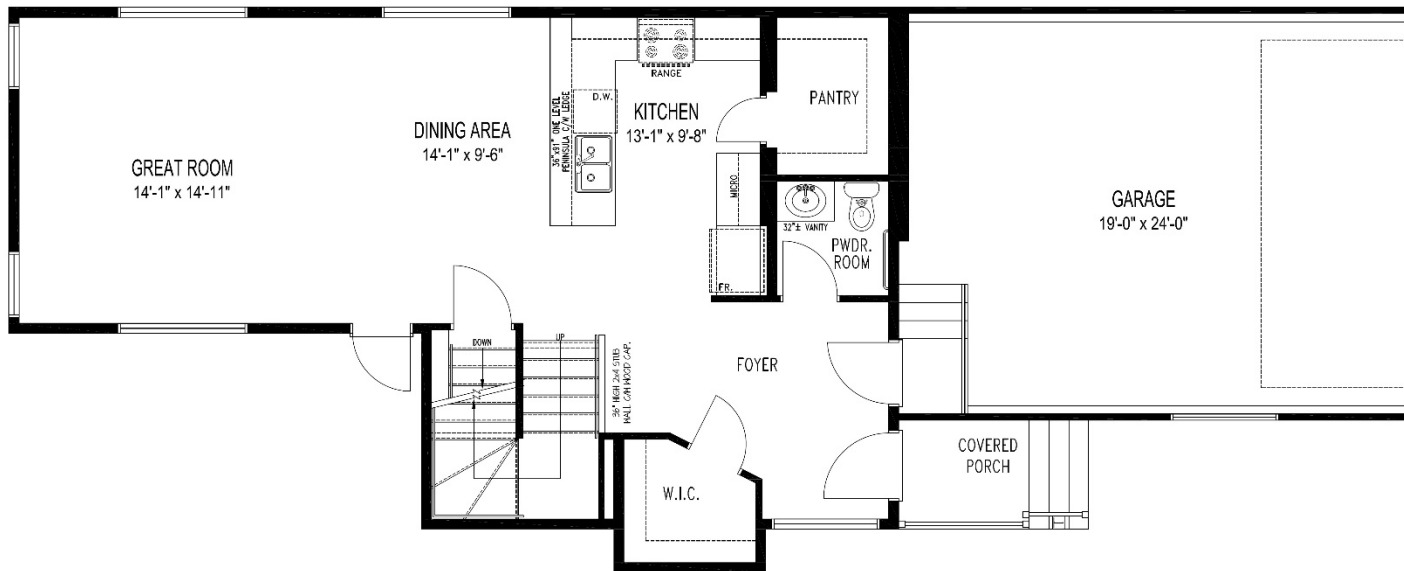


# Huxley C - 21

1,759 Sq. Ft  
3 Bedroom + Loft / 2.5 Bath  
\*optional features shown







- \*For marketing purposes only.**  
**Optional features shown:**
- Manufactured brick veneer to front elevation
  - Center garage and Upper exterior pot lights
  - Front door colour

# Huxley C - 21

1,759 Sq. Ft  
 3 Bedroom + Loft / 2.5 Bath

